

Understanding the basics of Assistive Technology



AT Device

Any aid acquired to increase, maintain, and improve the functional capabilities of individuals with disabilities



AT Service

Any service that directly assists an individual with a disability in selection, acquisition, or use of an AT device

Categories of AT

Computer Access Aids

Aids for Vision and Reading

Some AT categories are:

Communication Aids

Aids for Hearing and Listening

Levels of AT Devices

HIGH

Computerized or complex electronic aids that might require training like voice activated telephones or computer access software



Simple electronic features like closed caption televisions and talking spell checkers

MEDIUM

LOW

These do not have complex or mechanical features: pencil grips, handheld magnifiers, canes/walkers

AT in the Classroom

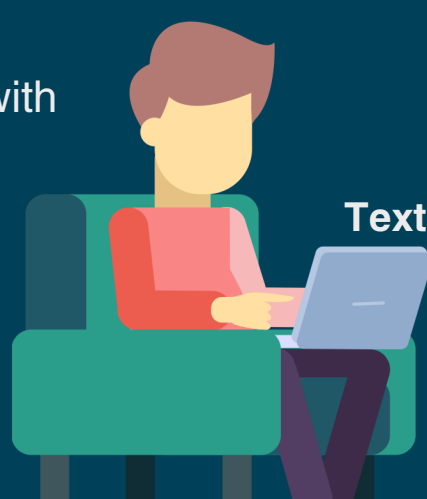
Communication Supports:

Communication methods for individuals who have trouble expressing themselves, understanding, or interacting with others



Speech

Text



Computer Access:

Alternative computer access methods for individuals with motor, visual, cognitive, or learning disabilities



For more information and resources on these topics, please visit www.ctdinstitute.org